



JSC "Katex"

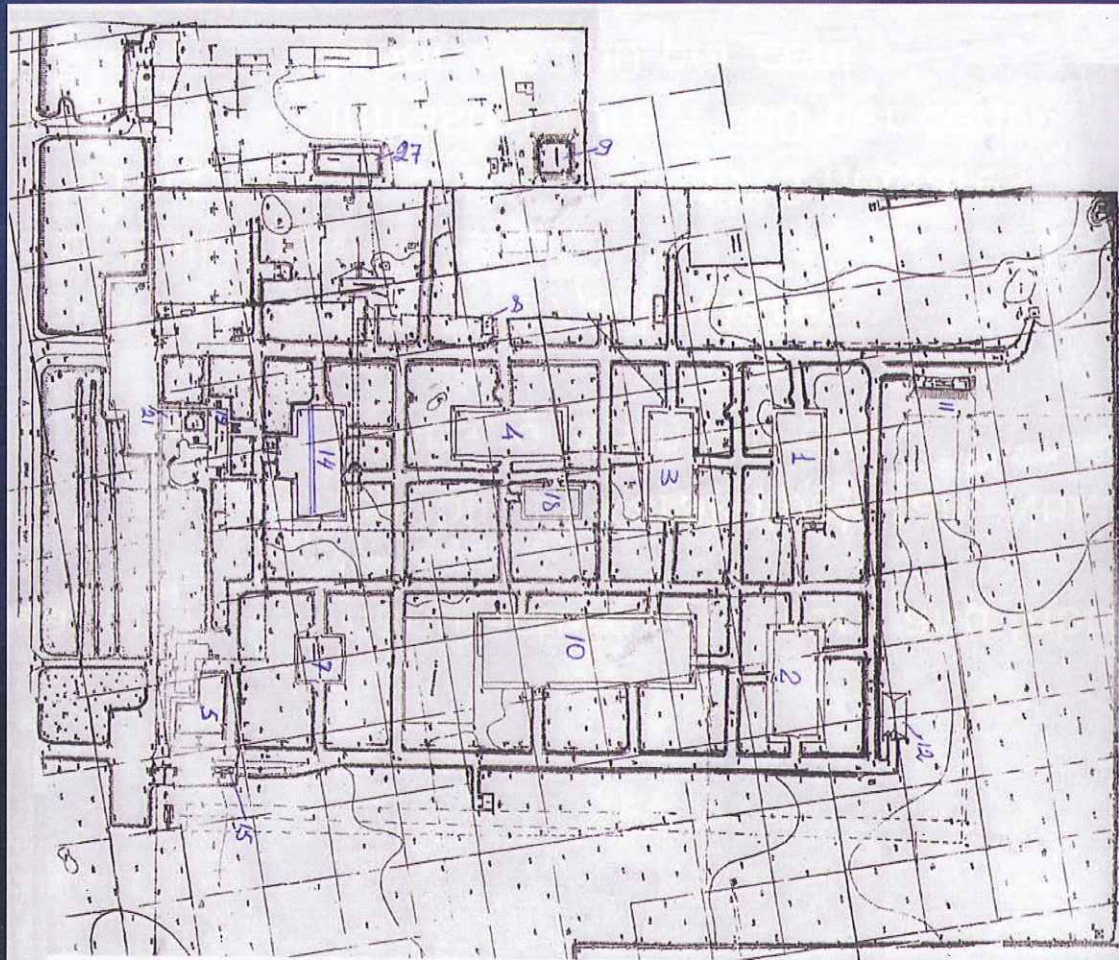
[55]

- Specialization manufacture of a yarn and fabric severe
- Location Republic of Karakalpakstan, Nukus
- Capacity 6 tons of yarn per day
- The area
 - Total area occupied - 27,8 hectares
- The area of buildings
 - and structures - 17,5 hectares
- Facilities
 - infrastructure - 100 per cent
 - labor - 100 per cent
- Conditions of sale - complex
- The equipment made in Italy, "Marzovi"



JSC "Katex"

[56]





JSC "Katex"

[57]





JSC "Katex"

[58]

